

**Official General Election Sample/Provisional Ballot  
November 5, 2024**

Snohomish County, Washington

**City/Town**

**City of Everett  
Initiative 24-03**

City of Everett Initiative No. 24-03 recognizing legally enforceable rights for the Snohomish River Watershed.

This ordinance would grant the Snohomish River Watershed legal rights that could be enforced by any resident of the City of Everett. Anyone who negatively impacts the Watershed's ability to exist, regenerate or flourish would violate this right and could be liable for damages, which would be paid to the City to use exclusively to restore the Watershed and repair any damages. Violations would not need to be proven to a scientific certainty.

Should this ordinance be enacted into law?

- Yes, for the Ordinance
- No, against the Ordinance

**City of Monroe  
Proposition No. 1**

Levy Lid Lift for Community Services

The Monroe City Council adopted Resolution 2024-015, concerning funding for community services, including public safety and parks. This proposition would provide funds for increased community services, including adding employees and equipment to operate/maintain parks and public safety. It authorizes a maximum regular property tax levy for collection in 2025 of \$1.08/\$1,000 of assessed valuation (an increase from 2024 of approximately \$0.22/\$1,000). The 2025 levy amount will be used to compute the limitations for subsequent levies under RCW 84.55. Qualifying seniors, veterans and others would be exempt under RCW 84.36.381.

Should this proposition be approved?

- Yes
- No

**City/Town**

**Town of Woodway  
Proposition No. 1**

Levy Lid Lift to Support Public Safety Services

The Woodway Town Council adopted Resolution No. 2024-465 concerning property taxes to support public safety services. This proposition sets Woodway's maximum property tax rate for collection in 2025 at \$1.54/\$1,000 of assessed value; sets a limit factor of 100% plus 5.5% for 2026 and 2027, and 100% plus 4.5% for 2028, 2029 and 2030; and uses the 2030 levy to calculate subsequent levy limits.

Should this proposition be approved?

- Yes
- No

**School**

**Arlington School District No. 16  
Proposition No. 1**

Capital Levy to Construct a New Post Middle School

The Board of Directors of Arlington School District No. 16 adopted Resolution No. 24-04, concerning a proposition to replace an aging and educationally outdated school. This proposition would authorize the District to levy the following excess taxes, on all taxable property within the District, to pay costs of constructing a new middle school to replace Post Middle School:

Collection Year	Estimated Levy Rate/\$1,000 Assessed Value	Levy Amount
2025	\$1.55	\$12,547,013
2026	\$1.55	\$12,923,423
2027	\$1.55	\$13,311,126
2028	\$1.55	\$13,710,460
2029	\$1.55	\$14,121,773
2030	\$1.55	\$14,545,426

all as provided in Resolution No. 24-04.

Should this proposition be approved?

- Levy Yes
- Levy No

**School**

**Lake Stevens School District No. 4  
Proposition No. 1**

Bonds to Construct, Modernize, Replace and Improve School Facilities

The Board of Directors of Lake Stevens School District No. 4 adopted Resolution No. 2-24, concerning a proposition to relieve overcrowding and provide safe, modern facilities. This proposition would authorize the District to: construct a new elementary school and a new innovative learning center on District-owned properties; modernize, replace and expand selected buildings at Glenwood and Skyline Elementary Schools and Lake Stevens Middle School; make District-wide safety, security, health, educational, athletic and infrastructure improvements; issue \$314,000,000 of general obligation bonds maturing within 20 years; and levy annual excess property taxes to repay the bonds, all as provided in Resolution No. 2-24.

Should this proposition be:

- Approved**
- Rejected**


**Sultan School District No. 311  
Proposition No. 1**

Bonds to Construct, Modernize and Improve Schools

The Board of Directors of Sultan School District No. 311 adopted Resolution No. 24-03, concerning a proposition to relieve overcrowding and provide safe, modern facilities. This proposition would authorize the District to: construct a new elementary school (Grades K-4), on a site located between 116th and 124th Streets SE, west of Sultan Basin Road; modernize, expand and convert Gold Bar Elementary School for Grades K-4; improve and convert Sultan Elementary School for Grades 5-6; issue \$79,715,000 of general obligation bonds maturing within 21 years; and levy annual excess property taxes to repay the bonds, all as provided in Resolution No. 24-03.

Should this proposition be:

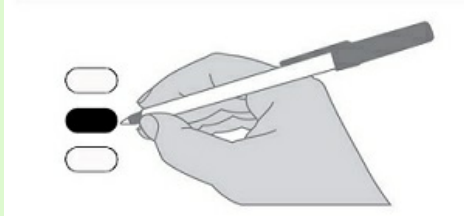
- Approved**
- Rejected**

 **End of Ballot.**  
Thank you for voting.

**Official General Election Sample/Provisional Ballot**  
**November 5, 2024**  
Snohomish County, Washington

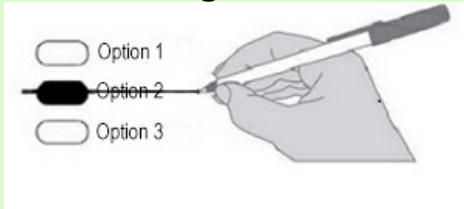
**Instructions**

**How to vote**



Fill in the oval next to your choice. You do not have to vote for every question or race. Voting more than once per question or race will cancel that vote.

**How to change a vote**



Draw a line through the entire incorrect name or choice. You may then make another selection.

**How to vote for a person not on the ballot**



Write the name of the person in the space provided at the end of the race and fill in the oval.

Find information on candidates and measures at [votewa.gov](http://votewa.gov).  
Find full text of state initiatives at [votewa.gov](http://votewa.gov).  
Find full text of local initiatives and ballot measures at [snoco.org/elections](http://snoco.org/elections).

For a list of the people and organizations that donated to federal candidates' campaigns, visit [www.fec.gov](http://www.fec.gov).  
For a list of the people and organizations that donated to state and local candidates and ballot measure campaigns, visit [www.pdc.wa.gov](http://www.pdc.wa.gov).

**Start voting here.**

**Initiative to the People**

**Initiative Measure No. 2066**

Initiative Measure No. 2066 concerns regulating energy services, including natural gas and electrification.

This measure would repeal or prohibit certain laws and regulations that discourage natural gas use and/or promote electrification, and require certain utilities and local governments to provide natural gas to eligible customers.

Should this measure be enacted into law?

- Yes
- No

**Initiatives to the Legislature**

**Initiative Measure No. 2109**

Initiative Measure No. 2109 concerns taxes.

This measure would repeal an excise tax imposed on the sale or exchange of certain long-term capital assets by individuals who have annual capital gains of over \$250,000. This measure would decrease funding for K-12 education, higher education, school construction, early learning, and childcare.

Should this measure be enacted into law?

- Yes
- No

**Initiatives to the Legislature**

**Initiative Measure No. 2117**

Initiative Measure No. 2117 concerns carbon tax credit trading.

This measure would prohibit state agencies from imposing any type of carbon tax credit trading, and repeal legislation establishing a cap and invest program to reduce greenhouse gas emissions. This measure would decrease funding for investments in transportation, clean air, renewable energy, conservation, and emissions-reduction.

Should this measure be enacted into law?

- Yes
- No

**Initiative Measure No. 2124**

Initiative Measure No. 2124 concerns state long term care insurance.

This measure would provide that employees and self-employed people must elect to keep coverage under RCW 50B.04 and could opt-out any time. It would also repeal a law governing an exemption for employees. This measure would decrease funding for Washington's public insurance program providing long-term care benefits and services.

Should this measure be enacted into law?

- Yes
- No

**County**

**Snohomish County  
Proposition No. 1**

Public Safety, Health, and Criminal Justice  
Sales and Use Tax

The Snohomish County Council passed Ordinance No. 24-047 concerning a public safety, health, criminal justice sales and use tax. This proposition would authorize the imposition of a county-wide sales and use tax, in addition to any other taxes authorized by law, of two tenths of one percent (0.2% -- 2 cents for every \$10) to be used for public safety, health, and criminal justice purposes, as authorized by RCW 82.14.450.

Should this proposition be:

- Approved
- Rejected

**Federal  
Partisan Office**

**United States  
President / Vice President**

Regular 4 year term - Vote for 1

- Kamala D. Harris / Tim Walz**  
*Democratic Party Nominees*
- Donald J. Trump / JD Vance**  
*Republican Party Nominees*
- Robert F. Kennedy Jr. / Nicole Shanahan**  
*We The People Party Nominees*
- Jill Stein / Rudolph Ware**  
*Green Party Nominees*
- Claudia De la Cruz / Karina Garcia**  
*Socialism and Liberation Party Nominees*
- Rachele Fruit / Dennis Richter**  
*Socialist Workers Party Nominees*
- Joseph Kishore / Jerry White**  
*Socialist Equality Party Nominees*
- Chase Oliver / Mike ter Maat**  
*Libertarian Party Nominees*
- Cornel West / Melina Abdullah**  
*Justice For All Party Nominees*
- Shiva Ayyadurai / Crystal Ellis**  
*Independent Candidates*
- Write-in

**Partisan Office Information**

**READ: Each candidate for President and Vice President is the official nominee of a political party. For other partisan offices, each candidate may state a political party that he or she prefers. A candidate's preference does not imply that the candidate is nominated or endorsed by the party, or that the party approves of or associates with that candidate.**

**Federal  
Partisan Office**

**U.S. Senator**

Regular 6 year term - Vote for 1

- Maria Cantwell**  
*(Prefers Democratic Party)*
- Dr Raul Garcia**  
*(Prefers GOP Party)*
- Write-in

**Congressional District 1  
U.S. Representative**

Regular 2 year term - Vote for 1

- Suzan DelBene**  
*(Prefers Democratic Party)*
- Jeb Brewer**  
*(Prefers Republican Party)*
- Write-in

**Congressional District 2  
U.S. Representative**

Regular 2 year term - Vote for 1

- Rick Larsen**  
*(Prefers Democratic Party)*
- Cody Hart**  
*(Prefers MAGA Republican Party)*
- Write-in

**Congressional District 8  
U.S. Representative**

Regular 2 year term - Vote for 1

- Kim Schrier**  
*(Prefers Democratic Party)*
- Carmen Goers**  
*(Prefers Republican Party)*
- Write-in

**State**

**Partisan Office**

**Governor**

Regular 4 year term - Vote for 1

- Bob Ferguson**  
*(Prefers Democratic Party)*
- Dave Reichert**  
*(Prefers Republican Party)*
- Write-in

**Lt. Governor**

Regular 4 year term - Vote for 1

- Denny Heck**  
*(Prefers Democratic Party)*
- Dan Matthews**  
*(Prefers Republican Party)*
- Write-in

**Secretary of State**

Regular 4 year term - Vote for 1

- Steve Hobbs**  
*(Prefers Democratic Party)*
- Dale Whitaker**  
*(Prefers Republican Party)*
- Write-in

**State Treasurer**

Regular 4 year term - Vote for 1

- Mike Pellicciotti**  
*(Prefers Democratic Party)*
- Sharon Hanek**  
*(Prefers Republican Party)*
- Write-in

**State Auditor**

Regular 4 year term - Vote for 1

- Pat (Patrice) McCarthy**  
*(Prefers Democratic Party)*
- Matt Hawkins**  
*(Prefers Republican Party)*
- Write-in

**Attorney General**

Regular 4 year term - Vote for 1

- Pete Serrano**  
*(Prefers Republican Party)*
- Nick Brown**  
*(Prefers Democratic Party)*
- Write-in

**Commissioner of Public Lands**

Regular 4 year term - Vote for 1

- Jaime Herrera Beutler**  
*(Prefers Republican Party)*
- Dave Upthegrove**  
*(Prefers Democratic Party)*
- Write-in

**Official General Election Sample/Provisional Ballot**  
**November 5, 2024**  
 Snohomish County, Washington

**State Nonpartisan Office**

**Superintendent of Public Instruction**  
 Regular 4 year term - Vote for 1

Chris Reykdal

David Olson

\_\_\_\_\_  
 Write-in

**Legislative Partisan Office**

**Legislative District 10 State Representative Pos. 1**  
 Regular 2 year term - Vote for 1

Clyde Shavers  
*(Prefers Democratic Party)*

Carrie R. Kennedy  
*(Prefers Republican Party)*

\_\_\_\_\_  
 Write-in

**Legislative Partisan Office**

**Legislative District 21 State Representative Pos. 2**  
 Regular 2 year term - Vote for 1

Lillian Ortiz-Self  
*(Prefers Democratic Party)*

Kristina Mitchell  
*(Prefers Conservative Party)*

\_\_\_\_\_  
 Write-in

**State Partisan Office**

**Insurance Commissioner**  
 Regular 4 year term - Vote for 1

Patty Kuderer  
*(Prefers Democratic Party)*

Phil Fortunato  
*(Prefers Republican Party)*

\_\_\_\_\_  
 Write-in

**Legislative District 10 State Representative Pos. 2**  
 Regular 2 year term - Vote for 1

Dave Paul  
*(Prefers Democratic Party)*

Gary Wray  
*(Prefers Republican Party)*

\_\_\_\_\_  
 Write-in

**Legislative District 32 State Representative Pos. 1**  
 Regular 2 year term - Vote for 1

Cindy Ryu  
*(Prefers Democratic Party)*

Lisa Rezac  
*(Prefers Republican Party)*

\_\_\_\_\_  
 Write-in

**Legislative Partisan Office**

**Legislative District 1 State Senator**  
 Regular 4 year term - Vote for 1

Derek Stanford  
*(Prefers Democratic Party)*

\_\_\_\_\_  
 Write-in

**Legislative District 12 State Senator**  
 Regular 4 year term - Vote for 1

Keith W. Goehner  
*(Prefers Republican Party)*

Jim Mayhew  
*(Prefers Democratic Party)*

\_\_\_\_\_  
 Write-in

**Legislative District 32 State Representative Pos. 2**  
 Regular 2 year term - Vote for 1

Lauren Davis  
*(Prefers Democratic Party)*

Lori Theis  
*(Prefers Republican Party)*

\_\_\_\_\_  
 Write-in

**Legislative District 1 State Representative Pos. 1**  
 Regular 2 year term - Vote for 1

Davina Duerr  
*(Prefers Democratic Party)*

Mark Davies  
*(Prefers Republican Party)*

\_\_\_\_\_  
 Write-in

**Legislative District 12 State Representative Pos. 1**  
 Regular 2 year term - Vote for 1

Heather Koellen  
*(Prefers Democratic Party)*

Brian Burnett  
*(Prefers Republican Party)*

\_\_\_\_\_  
 Write-in

**Legislative District 38 State Representative Pos. 1**  
 Regular 2 year term - Vote for 1

Julio Cortes  
*(Prefers Democratic Party)*

Annie Fitzgerald  
*(Prefers Democratic Party)*

\_\_\_\_\_  
 Write-in

**Legislative District 1 State Representative Pos. 2**  
 Regular 2 year term - Vote for 1

Shelley Kloba  
*(Prefers Democratic Party)*

\_\_\_\_\_  
 Write-in

**Legislative District 12 State Representative Pos. 2**  
 Regular 2 year term - Vote for 1

Mike Steele  
*(Prefers Republican Party)*

Daniel Scott  
*(Prefers Republican Party)*

\_\_\_\_\_  
 Write-in

**Legislative District 38 State Representative Pos. 2**  
 Regular 2 year term - Vote for 1

Mary Fosse  
*(Prefers Democratic Party)*

Marnie Claywell  
*(Prefers Republican Party)*

\_\_\_\_\_  
 Write-in

**Legislative District 10 State Senator**  
 Regular 4 year term - Vote for 1

Ron Muzzall  
*(Prefers Republican Party)*

Janet St Clair  
*(Prefers Democratic Party)*

\_\_\_\_\_  
 Write-in

**Legislative District 21 State Representative Pos. 1**  
 Regular 2 year term - Vote for 1

Strom Peterson  
*(Prefers Democratic Party)*

Riaz Khan  
*(Prefers Republican Party)*

\_\_\_\_\_  
 Write-in

**Legislative District 39 State Senator**  
 Regular 4 year term - Vote for 1

Keith L. Wagoner  
*(Prefers Republican Party)*

John Snow  
*(Prefers Democratic Party)*

\_\_\_\_\_  
 Write-in

**Legislative  
Partisan Office**

**Legislative District 39  
State Representative Pos. 1**  
Regular 2 year term - Vote for 1

- Sam Low**  
*(Prefers Republican Party)*
- Robert J. Sutherland**  
*(Prefers Republican Party)*
- Write-in

**Legislative District 39  
State Representative Pos. 2**  
Regular 2 year term - Vote for 1

- Carolyn Eslick**  
*(Prefers Republican Party)*
- Jackie Huey**  
*(Prefers Republican Party)*
- Write-in

**Legislative District 44  
State Representative Pos. 1**  
Regular 2 year term - Vote for 1

- Brandy Donaghy**  
*(Prefers Democratic Party)*
- Write-in

**Legislative District 44  
State Representative Pos. 2**  
Regular 2 year term - Vote for 1

- April Berg**  
*(Prefers Democratic Party)*
- Sam Sim**  
*(Prefers Republican Party)*
- Write-in

**Judicial  
Nonpartisan Office**

**Supreme Court  
Justice Position 2**  
Regular 6 year term - Vote for 1

- Sal Mungia**
- Dave Larson**
- Write-in

**Supreme Court  
Justice Position 8**  
Regular 6 year term - Vote for 1

- Steve Gonzalez**
- Write-in

**Supreme Court  
Justice Position 9**  
Regular 6 year term - Vote for 1

- Sheryl Gordon McCloud**
- Write-in

**Judicial  
Nonpartisan Office**

**Snohomish Superior Court  
Judge Position 12**  
Short & Full 4 year term - Vote for 1

- Whitney Rivera**
- Mary Anderson**
- Write-in

**Cascade District Court  
Judge Position 2**  
Unexpired 2 year term - Vote for 1

- Rachelle Francis**
- Write-in

**South District Court  
Judge Position 3**  
Unexpired 2 year term - Vote for 1

- Matthew Baldock**
- Write-in

**Public Utility  
Nonpartisan Office**

**Public Utility District No. 1  
Commissioner District 2**  
Regular 6 year term - Vote for 1

- Julieta Altamirano Crosby**
- Amber King**
- Write-in

**City/Town**

**City of Everett  
Initiative 24-01**

City of Everett Initiative No. 24-01  
establishing an increased minimum wage  
and other labor standards.

This ordinance would (1) create a minimum  
wage within the City limits of \$20.24 not  
including any tips and other compensation  
for large employers and phased in over 2  
years for smaller covered employers,  
increasing annually at the rate of inflation,  
(2) require employers to offer additional  
hours to existing part-time employees  
before hiring new employees, (3) prohibit  
retaliation against employees seeking to  
enforce these requirements, and (4)  
establish remedies and penalties for  
violations.

Should this ordinance be enacted into law?

- Yes, for the Ordinance**
- No, against the Ordinance**

**City of Everett  
Initiative 24-02**

City of Everett Initiative No. 24-02  
establishing an increased minimum wage  
and other labor standards.

This ordinance would (1) create a minimum  
wage within the City limits of \$20.24  
including any tips and other compensation  
for large employers and phased in over 2  
years for smaller covered employers,  
increasing annually at the rate of inflation,  
(2) require employers to offer additional  
hours to existing part-time employees  
before hiring new employees, (3) prohibit  
retaliation against employees seeking to  
enforce these requirements, and (4)  
establish remedies and penalties for  
violations.

Should this ordinance be enacted into law?

- Yes, for the Ordinance**
- No, against the Ordinance**