

April 16, 2024

Ms. Debbie-Anne A. Reese, Secretary  
Federal Energy Regulatory Commission  
888 First Street, NE  
Room 1A, East  
Washington, DC 20426

**Re: Request to Initiate NEPA Pre-Filing Process,**

Gulfstream LNG Development, LLC

Dear Ms. Reese:

In accordance with Title 18 of the Code of Federal Regulations (“CFR”) Section 157.21, Gulfstream LNG Development, LLC (“Gulfstream LNG”) hereby respectfully requests approval from the Federal Energy Regulatory Commission (“FERC” or “Commission”) to initiate its environmental pre-filing review of Gulfstream LNG’s proposed liquefied natural gas (“LNG”) export facility, to be constructed in Plaquemines Parish, Louisiana (the “Project”).

Gulfstream LNG will construct, own, and operate the Project which will have a planned capacity of 4 million tonnes per year (“MTPA”), which is equivalent to approximately 700 MMcf/d of natural gas, including 50 MMcf/d for on-site power generation. The facility will process treated pipeline gas sourced from the US natural gas pipeline network into LNG for export. Upon completion of the pre-filing process, Gulfstream LNG intends to file an application with FERC seeking authorizations under Section 3 of the Natural Gas Act (“NGA”).

Representatives of Gulfstream LNG met with Commission staff on March 27th, 2024, to introduce the Project and discuss the pre-filing process.

**Project Overview**

The Project will be constructed and located on an approximately 418-acre leased site with approximately 11,788 feet of frontage on the Mississippi River owned by Magnolia Terminal, LLC, south of town of Belle Chasse, Plaquemines Parish, Louisiana. The Gulfstream LNG Terminal Project site is undeveloped and there is minimal habitation or other activity in the immediate vicinity of the Project site.

As described in more detail in Section 4, below, the principal Project facilities would include: gas processing facilities, three (3) LNG trains each with an average base LNG production capacity of approximately 1.4 MTPA, one (1) LNG storage tank and tank protection systems, two (2) marine loading berths (one capable of receiving smaller barges and vessels, and one capable of receiving larger ocean-going LNG ships), and an on-site power generation plant.

A 26” natural gas pipeline owned by High Point Gas Transmission, LLC (“HPGT”) traverses through the Project site. Gulfstream LNG has executed a term sheet with HPGT to transport natural gas to the Project site. The HPGT system is engaged in the business of transporting natural gas in interstate commerce and connects to and crosses a number of gas pipelines from multiple gas producing basins.

Gulfstream LNG filed its application with the Department of Energy/Office of Fossil Energy to export LNG to both Free Trade Agreement and Non-Free Trade Agreement nations on March 10, 2023. On June 6, 2023, DOE/FECM Order No. 5014 authorized Gulfstream LNG to export domestically produced LNG by vessel to Free Trade Agreement nations. The authorized volume of 237.5 Bcf/yr (650 MMcf/d) of natural gas will commence on the date of first export following the start of commercial operation of the Project and to extend through December 31, 2050.

The current business model, subject to modification, envisages that Gulfstream LNG will be both (1) a toll processor of natural gas into LNG and associated extracted natural gas liquids, without taking ownership of the feed gas or the produced LNG and, (2) a seller of LNG and associated extracted natural gas liquids at the facility gates / marine port, taking ownership of the feed gas prior to processing. Gulfstream LNG may also offer different pricing mechanisms, including on a delivered basis, if requested to do so by its customers.

Gulfstream LNG will consider limited sales of LNG to domestic customers. These deliveries may be made using LNG tanker trucks as well as smaller barges and ships via the smaller of the two berths. LNG from the facility could be used by the road transport, ship bunkering, and space exploration sectors, among others. The ratio of export sales volumes to domestic sales volumes will be determined by market conditions over the project development period.

Gulfstream LNG will also evaluate the collection of carbon dioxide extracted from feed gas in its gas processing facility and from the on-site power generation facility emissions. Discussions have been initiated with carbon storage and utilization companies who may be able to import the carbon dioxide for permanent storage or conversion.

Construction and operation of the Project is subject to Commission authorization pursuant to Section 3 of the Natural Gas Act (NGA), 15 U.S.C. § 717b. Consistent with the goals of the FERC pre-filing process, Gulfstream LNG will work collaboratively with the Commission and interested federal, state, and local agencies to obtain all necessary permits and authorizations, and will also proactively engage in various public outreach activities, including holding open houses and disseminating information and updates about the Project to interested members of the public. After receiving Commission authorization and obtaining all other necessary permits, Gulfstream LNG intends to commence construction in 2027.

The Project site was previously permitted for a coal export facility. In association with this lapsed coal facility permit, the site and riverfront were extensively studied. Gulfstream LNG will have access to some of this data which could be leveraged for the current FERC permitting process.

In accordance with the Commission's mandatory pre-filing procedures and 18 CFR § 157.21(d), Gulfstream LNG provides the following information for the Project.

***1. A description of the schedule desired for the project including the expected application filing date and the desired date for Commission approval (18 CFR § 157.21(d)(1)).***

Gulfstream LNG plans to file its formal application with the FERC no sooner than 180 days after the commencement of the pre-filing process and only after Commission Staff agrees that the draft Resource Reports address the issues raised during the scoping process and are ready to be included in the formal application. Gulfstream LNG's anticipated Project schedule is set forth below:

<b>Milestone</b>	<b>Anticipated Schedule</b>
Gulfstream LNG submits Request to Initiate Pre-Filing Review Process	April 2024
OEP Director issues Authorization and Notice of Pre-filing Commencement	April 2024
Gulfstream LNG holds Open Houses, Site Visits and Agency Meetings	[July 2024]
Gulfstream LNG files NGA Section 3 Application	[September 2024]
FERC issues Final Environmental Impact Statement	[September 2026]
FERC issues Order granting Project Authorization	[March 2027]
FERC issues Authorization to proceed and commence Construction	[June 2027]
Gulfstream LNG in-service date	[January 2030]

**2 For LNG terminal facilities, a description of the zoning and availability of the proposed site and marine facility location (18 CFR § 157.21(d)(2)).**

The Project will be constructed and located on an approximately 418-acre leased Project site with approximately 11,788 feet of frontage on the Mississippi River owned by Magnolia Terminal, LLC, south of town of Belle Chasse, Plaquemines Parish, Louisiana. Louisiana Highway 23 parallels the property along the southern boundary. The Gulfstream LNG Terminal site is undeveloped, is within an area to be developed for commercial / industrial use and will be consistent with other facilities along the Mississippi River shoreline. There is minimal habitation or other activity in the immediate vicinity of the Project site. The site landlord, Magnolia Terminal, LLC, owns an additional 1,840 acres of undeveloped land abutting the Gulfstream LNG Project site on the southwardly end, across Louisiana Highway 23.

Gulfstream LNG has executed a Ground Lease of the Project site from Magnolia Terminal, LLC. The terms of the Ground Lease grant all the rights necessary to fully permit, develop and operate the Project. The Ground Lease includes an initial period, a permitting period, a 30-year primary term with the right and options to extend the lease for an additional 20 years.

The Gulfstream LNG Terminal site will be within an area to be developed for commercial / industrial use and will be consistent with other facilities along the Mississippi river shoreline. The Project site is located on the right descending bank of the Mississippi River, at about 48 miles

above Head of Passes, in Pointe a La Hache, Louisiana in Plaquemines Parish, as shown on the attached drawings. Coordinates of the proposed Project site extend from approximately 29°34'09"N 89°47'48"W to 29°33'31"N 89°47'18"W to 29°32'47"N 89°46'27"W to 29°32'37"N 89°46'43"W.

There is no habitation or other activity in the immediate vicinity of the land parcel. The closest census-designated place ("CDP") on the west side of the Mississippi River is Port Sulphur, Louisiana located approximately 6 miles from the Project site. The larger community of Belle Chasse is approximately 25 miles from the Project site.

Port of Plaquemines, Louisiana currently has a designation for this land as a "PORT/TERMINAL COMPLEX" per their Economic Invest Map as part of its Code of Ordinances and, hence, there are no restrictions on the use of the Project Site for Gulfstream LNG's proposed purposes.

**3. For natural gas facilities other than LNG terminal facilities and related jurisdictional natural gas facilities, an explanation of why the prospective applicant is requesting to use the pre-filing process under this section (18 CFR § 157.21(d)(3)).**

Not applicable.

**4. A detailed description of the project, including location maps and plot plans to scale showing all major plant components that will serve as the initial discussion point for stakeholder review (18 CFR § 157.21(d)(4)).**

The attached appendix section of this document contains Figure 1 & 2 (depicting the Project site location) and Figure 3, 4, & 5 (illustrating the preliminary site configuration and proposed plot plan for the Project).

Portions of the gas processing, and liquefaction facilities, utilities, and power plant assemblies will be built off-site in a modular fashion, transported to the Project site via ship, barge, or truck and then assembled on site. The remainder of the facilities, such as interconnecting pipe, LNG storage tank and similar structures will be "stick-built" on site.

### **Natural Gas Pipeline**

A 26" natural gas pipeline owned by High Point Gas Transmission, LLC ("HPGT") traverses through the Project site. Gulfstream LNG has executed a term sheet with High Point Gas Transmission, LLC and plans on a tie-in to this pipeline within the Project site to receive its feed gas. There will be no need to build any pipeline outside the Gulfstream LNG site. The HPGT system is engaged in the business of transporting natural gas in interstate commerce and connects or crosses a number of gas pipelines from multiple gas producing basins.

The facilities comprising the Gulfstream LNG Project will include:

## Gas Processing Facilities

Pipeline-quality natural gas will be received via the on-site connection to the 26" HPGT pipeline. The feed gas will be pre-treated prior to liquefaction using the following gas processing facilities:

- Mercury Removal – Mercury guard beds containing sulfur impregnated activated carbon to remove trace quantities of mercury in the natural gas feed stream to concentrations below detectable limits (0.01 micrograms per normal cubic meter).
- Acid Gas Removal – Acid gases, consisting primarily of carbon dioxide with trace quantities of other contaminants (such as hydrogen sulfide) will be removed from the feed natural gas by means of absorption in a water-based lean solvent in an Acid Gas Absorber.
- Dehydration – Water must be removed from the natural gas via dryer vessels filled with a high-performance molecular sieve to avoid freezing in the downstream cryogenic liquefaction section.
- Heavy Hydrocarbon Removal – The purpose for the removal of heavy hydrocarbons, otherwise known as natural gas liquids ("NGL"), is to meet product LNG specifications as well as to recover refrigerant makeup components from the feed gas. NGLs, which are a marketable commodity, will be trucked away from the Project Site and delivered to a processing facility.
- Carbon Dioxide Recovery systems to recover extracted CO<sub>2</sub> from the Acid Gas Removal unit.

## Liquefaction Facility

The Gulfstream LNG Project will produce up to 4.0 MTPA of LNG for export, which is equivalent to approximately 650 MMcf/d (237.5 Bcf/year) of feed natural gas based on 365 days/year operations.

The liquefaction facility will consist of three mid-scale liquefaction trains, each having a gross capacity of 1.4 MTPA. The total annual export capacity of the Project will be up to 4.0 MTPA. Each Baker Hughes proprietary Single Mixed Refrigerant ("SMR") process liquefaction train will include an electric motor drive refrigerant compressor.

## Marine and Loading Facilities

The water depth in the Mississippi river adjacent to the site is approximately 50 feet. Two loading berths will be built, each consisting of a single ship berth as well as sufficient area in front of the berth to allow barges, smaller vessels, and ocean-going LNG ships to turn and move into and out of the berth.

The facility will have one berth for smaller LNG fuel vessels and barges, and one for larger ocean-going LNG ships ranging from 145,000 cubic meters to up to 185,000 cubic meters cargo capacity.

## **LNG Storage Tanks**

The LNG will be stored onsite in one (1) Membrane Containment Tank System type M-CC with Concrete Membrane Tank Outer Container. The tank will have a nominal working volume of up to 200,000 cubic meters of LNG for which the outer tank wall would serve as the impoundment system. The LNG storage tank's outer concrete wall will have a liquid capacity of at least 110 percent of the membrane LNG tank's maximum liquid capacity.

## **Construction Support Areas**

The Project will require construction support areas for staging, laydown areas, contractor yards, and parking.

## **Material Offloading Facilities**

Gulfstream LNG plans to deliver equipment and materials during construction through a combination of roadway transport, barging, and shipping. Pilings and some equipment will be delivered via barge to a material offloading facility and temporary construction dock to be located at the Project site.

## **Utilities and Support Facilities**

Ancillary utilities and support facilities needed to support the gas processing, liquefaction, tanks and marine facilities will include the following:

- Warm and cold flares, Low Pressure Flare, marine flare and acid gas thermal oxidation
- Refrigerant, Amine and Hot Oil storage
- High Pressure Fuel gas system
- Low Pressure Fuel gas system
- Electric power distribution
- Firewater systems
- Hot oil Distribution
- Instrument air and Plant Air Systems
- Nitrogen generation Unit
- Potable Water
- Water demineralization
- Hazard detection system
- Emergency shutdown system
- Security system (physical and operational)
- Wastewater collection and treatment
- Sewage collection and treatment
- Miscellaneous storage (chemicals and lube oil)
- Warehouse, maintenance, control, and office buildings

## Power Supply

During normal operations it is expected that electric power be generated from a 275 Megawatt (maximum capacity) on-site 'carbon-capture ready' combined cycle gas power generation plant. The Project will also connect to the local power grid with power provided by the electricity utility company, Entergy Power for unplanned operations requiring up to 10 Megawatt.

**5. A list of the relevant federal and state agencies in the project area with permitting requirements. For LNG terminal facilities, the list shall identify the agency designated by the governor of the state in which the project will be located to consult with the Commission regarding state and local safety considerations (18 CFR § 157.21(d)(5)).**

Exhibit 1 identifies the federal and state agencies that have some form of review and/or permitting authority over the Project. Gulfstream LNG is in contact with agencies to set up discussions, will send Letters of Notification and request notice of each agency's desire to participate in the NEPA pre-filing review, and will follow-up with agencies that do not provide a written response. Gulfstream LNG will maintain open communication with these agencies through the pre-filing review process and respond in a timely manner to requests for information.

As required by 18 CFR 157.21(d)(12) and 33 CFR 127.007(a) and (f), Gulfstream LNG has filed its Letter of Intent and Preliminary Waterway Suitability Assessment ("WSA") with the USCG Captain of the Port (COTP) Sector New Orleans concurrently with the filing of this request to initiate the FERC pre-filing process. In accordance with (18 CFR 157.21(f)(13)) and 33 CFR 127.007 (g)(1)(i), a Follow-on WSA will be submitted to the USCG no later than the filing of the Section 3 application with the Commission.

Gulfstream LNG intends to pursue the associated authorizations concurrent with the Commission process and expects to submit all applications for federal authorizations to the relevant agencies no later than the date when Gulfstream LNG files its FERC Application. Gulfstream LNG has accounted for agency schedules for issuance of federal authorizations in its proposed Project timeline. The proposed 34-month processing time, from the date of filing of the NGA Section 3 application to the receipt of Commission authorization for the Project, should provide sufficient time for federal, state and local agencies to issue the associated authorizations required. Gulfstream LNG anticipates that the relevant agencies will issue their respective authorizations for the Project in accordance with the schedule set by the Commission pursuant to 18 CFR § 157.22(a) (2022). To the extent that other agency permits are not issued prior to Commission authorization of the Project, Gulfstream LNG assumes that Commission authorization to proceed with construction would be conditioned on obtaining such permits prior to starting construction.

**6. A list and description of the interest of other persons and organizations that have been contacted about the project (including contact names and telephone numbers) (18 CFR § 157.21(d)(6)).**

Gulfstream LNG is engaging in discussions with various interested parties and organizations. Exhibit 2 contains the contact names and details of these parties and organizations.

**7. A description of what work has already been done, e.g., contacting stakeholders, agency consultations, project engineering, route planning, environmental and engineering contractor engagement, environmental surveys/studies, and open houses. This description shall also include the identification of the environmental and engineering firms and sub-contractors under contract to develop the project (18 CFR § 157.21(d)(7)).**

A description of work completed by Gulfstream LNG is included below.

### **Stakeholder Contact**

Gulfstream LNG has initiated contact with various local stakeholders and has developed a detailed contact list of stakeholders that may be associated with the Project. See Exhibit 2 attached hereto.

Gulfstream LNG will maintain an information website ([www.gulfstreamlng.com](http://www.gulfstreamlng.com)) which will be regularly updated to include Project development and regulatory / permitting milestones, public notices, and media announcements.

### **Agency Consultations**

Gulfstream LNG has developed a detailed list of federal, state and local agencies that will be involved with, review or have permitting authority over the Project. See Exhibit 1 attached hereto.

### **Environmental and Engineering Contractor Engagement**

To date, Gulfstream LNG has engaged the following contractors to assist in the development of the Project:

- Kiewit (Plant project engineering and design)
- Honeywell / UOP (Engineering – Pre-Treatment technology)
- Baker Hughes (Engineering – liquefaction technology)
- Entergy Power (local power provider)
- High Point Gas Transmission (feed gas transportation providers)
- Waldemar S. Nelson & Co., Inc (Environmental and Permitting consultants)
- Gaztransport & Technigaz (“GTT”) (LNG containment specialist)
- Greenberg Traurig (FERC Legal and Regulatory support)
- AcuTech (Waterway Suitability Assessment)
- Latter & Blum (Local advisors)



## Engineering Update

The engineering activities will be divided as mentioned below, subject to further negotiations and agreement execution:

- Honeywell / UOP will likely lead the engineering efforts for Pre-Treatment section of the facility.
- Baker Hughes will likely lead the engineering efforts for the Liquefaction section of the facility.
- Kiewit Corporation will likely lead the engineering for the balance of plant (BOP) units.
- GTT will likely lead the engineering for LNG tank storage.

Further contractors and consultants will be engaged as needed to develop Resource Reports.

## Environmental Surveys/Studies

A desktop assessment for the Project Site which will evaluate potential environmental impacts. This assessment will include an investigation of geotechnical, wetlands, threatened and endangered species habitat, cultural resources potentially present and potential high-level stakeholder issues. This will be followed by field investigations including geotechnical analysis for the site, including seismic and baseline noise surveys around noise sensitive areas. This work is anticipated to be conducted during 2024.

The Project site was previously permitted for a coal export facility. In support of the permit for the coal export facility, WS Nelson and Company, inc. has performed the following work; Reviewed Geotech reports for foundations, reviewed archaeological reports for site development, designed structures on the coal terminal property, performed site investigation of spill contamination, performed a waterline survey, assisted in developing air quality permits, performed substation design, and dock revisions for a conveyor system.

***& For LNG terminal projects, proposals for at least three prospective third-party contractors from which Commission staff may make a selection to assist in the preparation of the requisite National Environmental Policy Act (NEPA) document (18 CFR § 157.21(d)(8)).***

[Request for Proposals for a third-party contractor to support the Commission in preparation of the Environmental Impact Statement were submitted during the review of this draft.]

[3] companies submitted bids to Gulfstream LNG. Contemporaneously with this filing, Gulfstream LNG is providing Commission Staff with the response packages from the third-party contractors for review and selection.

<p>Edge Engineering and Science                  Jenny McCoy                  Senior Environmental Consultant                  16285 Park Ten Place, Suite 400                  Houston, Texas 77084                  832-772-3004  <a href="mailto:JMMcCoy@edge-es.com">JMMcCoy@edge-es.com</a>                  Submitted Proposal</p>	<p>Burns &amp; McDonnell                  Robyn Susemihl                  Senior Project Manager                  1700 West Loop South, Suite 1500                  Houston, TX 77027                  713-622-0227  <a href="mailto:rssusemihl@burnsmcd.com">rssusemihl@burnsmcd.com</a>                  Submitted Proposal</p>
<p>EXP                  Michael C. Aubele                  Director, Environmental &amp; Regulatory                  11330 Clay Road Suite 550                  Houston, Texas 77041                  Direct: 713-985-9914  <a href="mailto:mike.aubele@exp.com">mike.aubele@exp.com</a>                  Did Not Submit Proposal</p>	<p>TRC Companies                  Jim Eberwine, M.S., RPA                  Planning, Permitting, and Licensing                  550 Elmwood Park Blvd., Suite A,                  Elmwood, LA 70123                  C 504.756.4954  <a href="mailto:jeberwine@trccompanies.com">jeberwine@trccompanies.com</a>                  Did Not Submit Proposal</p>
<p>Perennial Environmental Services                  Amy Butler                  NEPA Director                  13100 Northwest Freeway, Suite 150                  Houston, Texas 77040                  713-360-0613  <a href="mailto:abutler@perennialenv.com">abutler@perennialenv.com</a>                  Submitted Proposal.</p>	<p>Three (3) of the five (5) contractors submitted proposals. EXP and TRC Companies decided not to submit proposals.</p>

**9. For natural gas facilities other than LNG terminal facilities and related jurisdictional natural gas facilities, proposals for at least three prospective third- party contractors from which Commission staff may make a selection to assist in the preparation of the requisite NEPA document, or a proposal for the submission of an applicant-prepared draft Environmental Assessment as determined during the initial consultation described in 18 CFR § 157.21(c) (18 CFR § 157.21(d)(9)).**

Not applicable.

**10. Acknowledgement that a complete Environmental Report and application are required at the time of filing (18 CFR § 157.21(d)(10)).**

Gulfstream LNG hereby acknowledges that a complete Environmental Report and application pursuant to Section 3(a) must be submitted to the Commission at the time of filing the application.

**11. A description of a Public Participation Plan which identifies specific tools and actions to facilitate stakeholder communications and public information, including a project website and a single point of contact. This plan shall also describe how the applicant**

***intends to respond to requests for information from federal and state permitting agencies, including, if applicable, the governor's designated agency for consultation regarding state and local safety considerations with respect to LNG facilities (18 CFR § 157.21(d)(11)).***

Gulfstream LNG is committed to open, accurate and responsive engagement with stakeholders throughout the development process. To that end, Gulfstream LNG is in the process of completing its Public Participation Plan. That plan will:

- Make a formal announcement of the Project to local, state, and federal elected officials and also notify key special interest groups.
- Hold meetings with local, state, and federal regulatory agencies previously contacted to identify other stakeholders and to initiate pre-filing activities with each agency.
- Continue to identify other governmental organizations to inform them about the Project and address any issues that are raised by the parties represented by these organizations.
- Continue to identify and meet with key audiences and stakeholder groups, local associations, neighborhood groups, and other non-government organizations to inform them about the Project and address any issues that may be raised.
- Hold technical workshops or open houses in order to provide information about LNG projects to all of the interested state and federal agencies, affected landowners, as well as the public.
- Continue to identify and hold meetings with local associations, affected groups, and other non-governmental organizations concerning the Project.
- Provide all required support needed for the Commission to conduct public scoping meetings.
- Ensure the support and commitment of all levels of Gulfstream LNG management.
- Establish appropriate training for Gulfstream LNG staff and stakeholder outreach representatives.
- Maintain a publicly available website ([www.GulfstreamLng.com](http://www.GulfstreamLng.com)) with information regarding the status of the Project. The website will be active within 15 days of the Commission's approval of this request to initiate the pre-filing review process and will be populated with the information listed below:
  - A list of public repositories where all Project related information will be available for inspection.
  - A description of the Project.
  - Project schedule.
  - Project benefits.
  - Fact sheets on LNG basics.
  - Links to other LNG information websites.
  - News releases.
  - Frequently asked questions, with responses.
  - A list of questions and issues raised at open houses and Gulfstream LNG's responses to each.
  - Applications filed with the Commission.
  - Environmental documents issued by the Commission.
  - Other appropriate Project related information.
  - Contact information; and

A single point of contact is in the process of being established for the Project. In the short-term the contact will be Gulfstream LNG's Environmental and Permitting consultants:

Bill Rushing  
Waldemar S. Nelson & Co., Inc  
1200 St. Charles Ave.  
New Orleans La., 70130  
Office phone (504)-523-5281  
Direct (504)-593-5303  
Cell (504)-390-2455  
Fax (504)-523-4587  
Email: bill.rushing@wsnelson.com

***12. Certification that a Letter of Intent and a Preliminary Waterway Suitability Assessment (WSA) will be submitted to the U.S. Coast Guard or, for modifications to an existing or approved LNG terminal, that the U.S. Coast Guard did not require such information (18 CFR § 157.21(d)(12)).***

Gulfstream LNG hereby certifies that it will submit the Letter of Intent and Preliminary Waterway Suitability Assessment to Captain Kristi Luttrell, U.S. Coast Guard, Sector New Orleans.

***13. Initial Consultation (18 CFR § 157.21(c))***

As required by 18 CFR § 157.21(c), Gulfstream LNG has consulted with the Commission's Office of Energy Projects on March 27<sup>th</sup>, 2024 with respect to the nature of the Project, the content of the pre-filing request, and the status of Gulfstream LNG's progress toward initiating the pre-filing process. Based on the foregoing information, Gulfstream LNG respectfully requests that the Commission approve this request to initiate the pre-filing review process. Should you have any questions about this request, please feel free to contact the undersigned.

Respectfully submitted,

Vivek Chandra  
CEO, Gulfstream LNG, LLC  
[vc@gulfstreamlng.com](mailto:vc@gulfstreamlng.com)  
(832) 814-9056

Gulfstream LNG Legal Counsel: Greenburg Traurig  
Gulfstream LNG Environmental and Permitting Consultants: Waldemar S. Nelson & Co., Inc

Enclosures

cc:

Shannon Jones, Acting Director of Division of Gas, Environment & Engineering

Andrew Kohout, Chief, Division of LNG Engineering

Pamela Boudreau, Division of Pipeline Certificates

David Swearingen, Chief, Gas Branch 4

Hosanna Loreaux, Office of Energy Projects

# APPENDIX

FIGURE 1 & 2: Gulfstream LNG Project Site, Plaquemines Parish, Louisiana

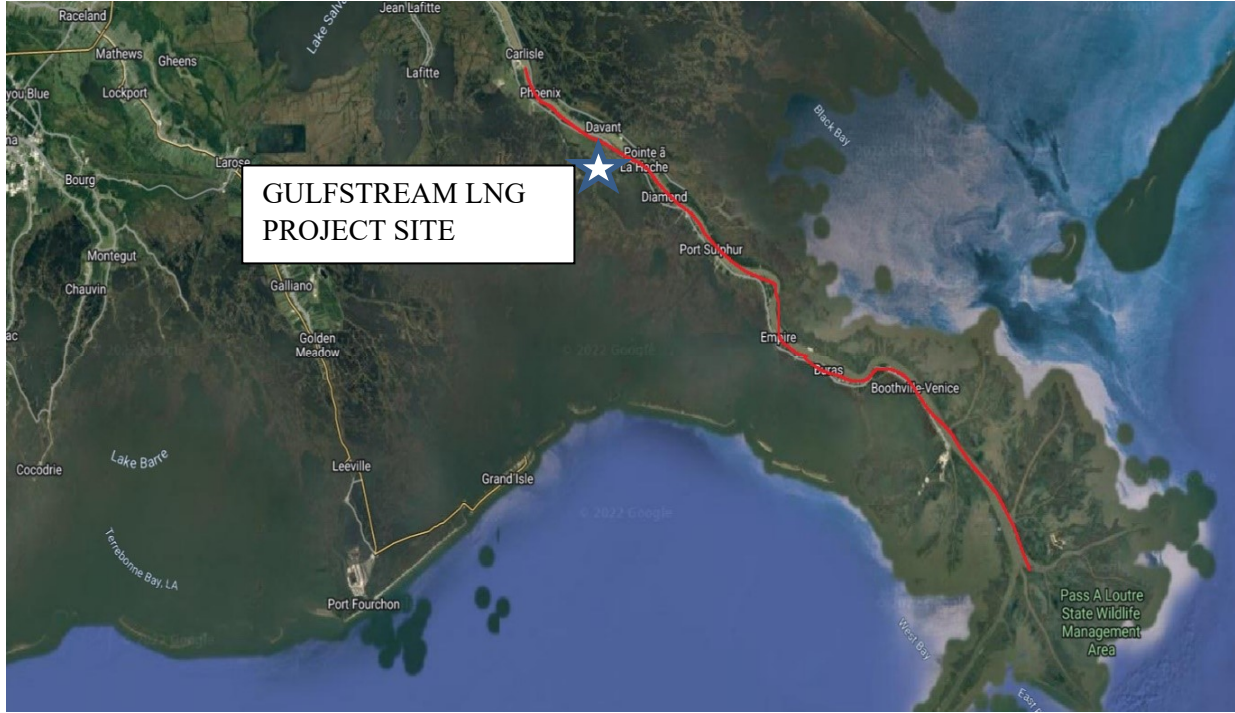


Figure 3 & 4: Gulfstream LNG Export Terminal Preliminary Plot Plan





Figure 5: Gulfstream LNG preliminary process layout



Contact Information for Agencies with Permits or  
Authorizations Applicable to the Gulfstream LNG Project  
Anticipated Federal, State, and County Permits, Approvals,  
and Consultations

<b>Gulf Stream LNG Project Permits, Approvals, and Clearances</b>	
Agency / Contact Name / Phone Number	Permit/Approval/ Regulatory Scope/Meeting or Notification Sent
<b>Federal</b>	
Federal Energy Regulatory Commission (FERC)  Terry Turpin, Director, Office of Energy Projects 202-502-8700	Authorization to Construct and Operate Facilities under section 3(a) of the Natural Gas Act
U.S. Department of Energy, Office of Fossil Energy (DOE/FE)  Larine A. Moore 202-586-9478	Authorization to export LNG by LNG carrier to Free Trade Agreement (FTA) and non-FTA nations
U.S. Department of Homeland Security – U.S. Coast Guard  Waterway Management Division, 8 <sup>th</sup> District 504-671-2107  Captain Kelly K. Denning Sector Commander	Waterfront Facilities Handling Liquefied Natural Gas and Liquefied Hazardous Gas (33 Code of Federal Regulations [CFR] 127), which includes Letter of Intent submission (33 CFR 127.007), Waterway Suitability Assessment (WSA) consultation (including Preliminary WSA and Follow-on WSA), and Letter of Recommendation from the U.S. Coast Guard (18 CFR 157.21)
U.S. Environmental Protection Agency – Region VI, D2, 3, 4as, TX  Earthea Nance Ph.D, P.E., Regional Administrator 214-665-2200	Consultation role to Louisiana Department of Environmental Quality on air emissions permitting. Floodplain management and protection of wetlands (44 CFR 9) Review of wetlands impacts for U.S. Army Corps of Engineers Clean Water Act Section 404 permit.
U.S. Army Corps of Engineers (USACE) – New Orleans District  Mark Wingate, Deputy District Engineer 504-862-2512	Clean Water Act Section 404 Permit for impacts on waters of the United States, including wetlands (33 United States Code [USC] §1344)  Rivers and Harbors Act Section 10 Permit for construction and operation of structures in and across federally navigable waterways (33 USC § 403)  Section 408 authorization for work to alter USACE civil works (e.g., levees) (33 USC Section 408)

<p>U.S. Department of Commerce, National Oceanic and Atmospheric Administration, National Marine Fisheries Service</p> <p>Andy Strelcheck, Deputy Regional Administrator 727-551-5702</p>	<p>Marine Mammal Act Consultation (16 USC § 1382)</p> <p>Endangered Species Act Section 7 Consultation (16 USC § 1856 et seq.)</p> <p>Magnuson-Stevens Fishery Conservation and Management Act Consultation Essential Fish Habitat Consultation (50 CFR Part 600)</p>
<p>U.S. Fish and Wildlife Service, Southeast Region 4</p> <p>Bill Lynn, Endangered Species Act permitting, consultation 251-441-5868</p>	<p>Endangered Species Act Section 7 Consultation (16 USC § 1536)</p> <p>Migratory Bird Treaty Act Consultation (16 USC §§ 703 et seq.)</p> <p>Fish and Wildlife Coordination Act Consultation (16 USC §§ 661 et seq.)</p>
<p>Federal Aviation Administration (FAA)</p> <p>Rob Lowe, Southwest Region Regional Administrator 817-222-5001</p>	<p>FAA's regulations at 14 CFR Part 77.</p>
<p>U.S. Department of Transportation Pipeline and Hazardous Materials Safety Administration</p> <p>Alan K. Mayberry Associate Administrator for Pipeline Safety 202-366-4595</p>	<p>Letter of No Objection 49 CFR 193 Subpart B</p>

<b>State</b>		
Agency / Contact Name / Phone Number	Permit/Approval/ Regulatory Scope	Meeting or Notification Sent
<p>Louisiana Department of Natural Resources</p> <p>Mark Browning, Manager 225-342-9137</p>	<p>Notice of Construction</p>	<p>Letter of Notification Sent</p>
<p>Louisiana Department of Environmental Quality – Water Permits Division</p> <p>Scott Guilliams, Water Permits Administrator 225-219-9371</p>	<p>Section 401 Water Quality Certification (33 USC § 1341)</p> <p>LPDES Industrial Hydrostatic Test Water Discharge General Permit (La. R.S. 30:2001 et seq.).</p> <p>Wastewater Discharge Permit, Section 402 (33 USC § 1342).</p>	<p>Letter of Notification Sent</p>

Louisiana Department of Environmental Quality – Office of Environmental Quality Bryan Johnston, Air Permits – Administrator 225-219-3417	Title V and Prevention of Deterioration of Significant (PSD) Air Permits (40 CFR Part 70)	Letter of Notification Sent
Louisiana Department of Natural Resources – Office of Coastal Management  Keith Lovell, Assistant Secretary 225-342-7591	Coastal Use Permit (CUP), a Joint Permit Application with U.S. Army Corps of Engineers (R.S. 49:214.25)	Letter of Notification Sent
Louisiana Department of Natural Resources – Office of Conservation  Greg Galle, Conservation Program Manager 225-342-5505	Title 38, Section 3098 (R.S. 38:3098 – Chapter 13-B: Subsurface Water- Well Drillers	Letter of Notification Sent
Louisiana Department of Wildlife and Fisheries  Stephen Clark – Assistant Secretary/Wildlife 225-765-2800	Threatened and Endangered Species Consultation (16 USC §§ 460 et seq.)	Letter of Notification Sent
Louisiana Department of Culture, Recreation and Tourism, Division of Archaeology  Dr Charles McGimsey, Director 225-21904598	National Historic Preservation Act Section 106 Consultation (36 CFR Part 800) and Review	Letter of Notification Sent
Louisiana Office of State Lands  Lawrence Rosso, Jr., Section Manager 225-342-4600	Permit and Lease for State Water Bottoms (L.S.R. 41:1701-1714)	Letter of Notification Sent
Louisiana Department of Transportation and Development  Dawn Sholmire, Transportation Planning Administrator 225-379-1218	Driveway Access Utility Permit (State Law)	Letter of Notification Sent
<b>Local</b>		
Parish & Zoning Department Ametra Rose (504)934-6132	Building Permit	Letter of Notification Sent

Southeast Louisiana Flood Protection Authority  Clay A. Cosse President 504-286-3100	Crossing Permit, Construction Permit	Letter of Notification Sent
<b>River Navigation Associations</b>		
Crescent River Port Pilots Association	E. Michael Bopp (504)392-5017	Introductory meeting was on 4/3.
<b>Native American Tribes</b>		
Chitimacha Tribe of Louisiana  Kimberly S. Walden THPO Officer 337-923-9923	Consultation	Letter of Notification Sent
Jena Band of Choctaw Indians  Johnna Flynn THPO Officer 318-992-4183	Consultation	Letter of Notification Sent
Coushatta Tribe of Louisiana  Kristian Poncho THPO Officer 337-275-1350	Consultation	Letter of Notification Sent
Tunica-Biloxi Indians of Louisiana  Earl J. Barbry Jr. THPO Officer 800-272-9767 x6451	Consultation	Letter of Notification Sent

LOCAL STAKEHOLDERS WITHIN ½ MILE OF FACILITY			
Parcel#	Name	Physical Address	Mailing Address
1016050	DORE' ENERGY CORP, THE		C/O NOBLE ROYALTIES INC MERIT ADVISORS PO BOX 330 GAINESVILLE TX 76241
1043900	BARTHOLOMEW, JAMES & MARGIE	24461 DIAMOND RD	C/O WELTON BARTHOLOMEW 24461 DIAMOND RD PORT SULPHUR LA 70083
1044200	BARTHOLOMEW, CAROL EST & JANE P	24453 DIAMOND RD	24453 DIAMOND RD PORT SULPHUR LA 70083- 2154
1044300	BARTHOLOMEW, WELTON J		5316 TUSA DR MARRERO LA 70072
1052050	SHINGLE POINT LLC		8311 HWY 23 BELLE CHASSE LA 70037
1141150	DAVIS, AUGUSTA C EST	120 REDDICK LN	C/O ODESSA DAVIS-ARMANT 7241 NORTHGATE DR New Orleans LA 70128
1172700	EGGLESTON, CLARK S		C/O CLARK EGGLESTON JR 768 E WILLIAM DAVID PKWY METAIRIE LA 70005
1174600	EGGLESTON, CLARK S		C/O CLARK EGGLESTON JR 768 E WILLIAM DAVID PKWY METAIRIE LA 70005
1301200	LANDRY, GEORGE EST	110 LANDRY LN	110 LANDRY LN PORT SULPHUR LA 70083
1301250	LANDRY, GEORGE R EST	117 LANDRY LN	C/O DAMIND LANDRY 3845 ALEXANDER LN MARRERO LA 70072
1302250	LANDRY, LULA L ET AL	136 LANDRY LN	136 LANDRY LN PORT SULPHUR LA 70083
1332250	MAGNOLIA TERMINAL LLC		430 NOTRE DAME ST New Orleans LA 70130
1353300	MENGE, A MRS EST		C/O CAROLYN KASS 626 HANCOCK ST Gretna LA 70053
1379100	PLAQUEMINES PARISH VENTURES LLC		11745 BRICKSOME AVENUE SUITE B-4 BATON ROUGE LA 70816

1379150	LAMB ENTERPRISES LLC		54053 HWY 433 SLIDELL LA 70461
1379200	NOLAN, SIDNEY D		2775 NW GLENWOOD DR CORVALLIS OR 97330-3174
1379250	REDDICK, LOUIS JR EST	24426 DIAMOND RD	C/O MARY BARTHELEMY & MARTHA RAGAS PO BOX 945 PORT SULPHUR LA 70083
1429400	SMITH, BERNICE REDDICK	138 REDDICK LN	138 REDDICK LN PORT SULPHUR LA 70083
1429450	REDDICK, JOHN W MRS		138 REDDICK LN PORT SULPHUR LA 70083
1429500	REDDICK, HELEN D EST	114 REDDICK LN	C/O GWENDOLYN RAGAS 5113 PRITCHARD RD MARRERO LA 70072
1429700	REDDICK, ROSITA MRS	24426 DIAMOND RD	24426 DIAMOND RD PORT SULPHUR LA 70083
1436900	RILEY, MARY A L		133 BERGERON RD BELLE CHASSE LA 70037
1442300	EOTT ENERGY PARTNERS LP	Dock	ATTN: PROPERTY TAX DEPARTMENT P O BOX 4648 HOUSTON TX 77210-4648
1471800	SMITH, BERNICE R	138 REDDICK LN	138 REDDICK LN PORT SULPHUR LA 70083
1480800	ST ANN, FELICIA L EST	113 MORRIS LN	C/O ANGIE ANCAR 1021 LOU SCRATZ LN BREAUX BRIDGE LA 70517
1482600	CHIASSON, CATHERINE S		P O BOX 1888 HARVEY LA 70059-1888
1492450	SYLVE, SARAH A	130 MORRIS LN	C/O SARAH SYLVE, USUFRUCT P O BOX 384 PORT SULPHUR LA 70083-0384
1492700	SYLVE, EDDIE JR EST	137 LANDRY LN	21621 HWY 23 PORT SULPHUR LA 70083
1493400	SYLVE, JOHN A EST		C/O CAROLYN A. SYLVE PO BOX 733 PORT SULPHUR LA 70083
1493800	SYLVE, LONEY S	145 LANDRY LN	145 LANDRY LN PORT SULPHUR LA 70083-2205
1493900	SYLVE, LOUIS EST & LYNDA EST	142 MORRIS LN	C/O ELLIOT SYLVE, SON 130 MORRIS LN PORT SULPHUR LA 70083

1494600	SYLVE, PIERRE E EST	22980 HWY 23	C/O NELSON SYLVE-GRANDSON 2933 BROOKWOOD ST Gretna LA 70056
1529250	ALEXIS, CECELE S		24406 DIAMOND RD PORT SULPHUR LA 70083
1529325	ALEXIS, CECELE S	24406 DIAMOND RD	24406 DIAMOND RD PORT SULPHUR LA 70083
1529500	ALEXIS, MICHAEL ANTHONY SR		2304 ENGINEERS RD SUITE B BELLE CHASSE LA 70037
1529700	VULLO, SULLIVAN J & JANET A L		P O BOX 219 PORT SULPHUR LA 70083-0219
1556100	ZENO, ALICI (TUTRIX)		C/O CHERYL LAMPENTO 709 MAC ARTHEUR AVE HARVEY LA 70058-2624
1601870	LANDRY, ELAINE F	110 LANDRY LN	PO BOX 594 PORT SULPHUR LA 70083
8404150	ST PATRICK'S CATHOLIC CHURCH	28698 HWY 23	28698 HWY 23 PORT SULPHUR LA 70083
1378022	PORT SHIP SERVICE INC		P O BOX 369 ARABI LA 70032-0369
8453924	PLAQUEMINES PARISH GOVERNMENT	WATER PLANT	8056 HWY 23 BELLE CHASSE LA 70037
1579770	SHINGLE POINT LLC		C/O MARK PIVACH P O BOX 7125 BELLE CHASSE LA 70037-7125

#### Other Possible Stakeholders

Property ownership research including water bottom ownership.

Delta National Wildlife Refuge (Special use permit).

Local levee Board.



Document Content(s)

GS LNG FERC Pre-Filing Application April 16.pdf.....1