



PennState Law

Center for Agricultural and Shale Law

From the Director:

It has been another busy year for the staff of the Center for Agricultural and Shale Law at Penn State Law. As our name suggests, we have prepared a range of research and educational work products on agricultural and shale law issues. Our work has focused on each of these two fields separately as well as on topics at the intersection between agriculture and shale development. In our home state of Pennsylvania, agriculture has long been a driving force for the state's economy with a particular impact on our rural communities. Similarly, within the past decade, shale development, occurring on agricultural and rural lands, has revitalized economic development within many rural communities as well as the state generally. The impacts of agriculture and shale development are not unique to Pennsylvania as these are two of the biggest issues affecting rural America. Our work has educated the varied stakeholders interested in these related topics including agricultural producers, landowners, mineral interest and royalty owners, business professionals, judges, attorneys, legislators, government officials, community groups, and the general public. In this newsletter, we provide you with additional information about our work over the past year. Thanks for your interest!

Sincerely,

Ross Pifer

Center Director

2018 Newsletter

**Highlighting research and educational programs
from the past year.**



Center Publishes The Agricultural Law Brief

The [Agricultural Law Brief](#) (ALB) is a monthly publication that provides interested stakeholders with information regarding five important agricultural legal developments each month. CASL staff members conduct ongoing legal research each business day throughout the year to track relevant legal developments. At the beginning of each month, we select five noteworthy legal developments from the prior month and write articles briefly discussing each of the chosen topics. CASL staff then work with the Penn State Law Communications Office to disseminate the ALB to our electronic database of subscribers from across the United States. A print version, displayed to the right, is prepared each month for direct distribution to stakeholders at Center presentations and other events. Visit our website to [subscribe to the ALB](#). Archived versions of the ALB also are available on our website.

Center Staff Attorney Sean High Provides Educational Outreach on Agricultural Labor Issues

Proper understanding and compliance with the various federal and state laws that govern agricultural labor is essential for the long-term success of every agricultural producer. A firm understanding of agricultural labor laws allows for informed decision making and provides producers with a greater ability to control labor costs. Failure to comply, however, could lead to significant financial penalties and jeopardize long-term viability. Because federal and state labor laws often can be difficult to comprehend, Staff Attorney Sean High prepared several work products addressing relevant labor issues. First, he delivered multiple presentations that provided attendees with information regarding minimum wage, overtime, and child labor laws. Next, Sean authored a publication entitled *H-2A Reference Guide: Understanding the Temporary Agricultural Guest Worker Program*. Due to the lack of a willing and qualified workforce, many farmers have been considering use of the federal H-2A guest worker program. To assist those interested in the subject, Sean also conducted a webinar for the Agricultural & Food Law Consortium entitled [Understanding the H-2A Temporary Agricultural Guest Worker Program](#). Finally, to further stakeholder comprehension of the H-2A program, Sean gave presentations on the topic at the Penn State Ag Council Delegate Meeting and at the Mid-Atlantic Fruit & Vegetable Convention. With the strong stakeholder interest in this topic, Sean is continuing to prepare relevant legal resources.



The Agricultural Law Brief - Print Edition

May 2018	COURT RULES BEEF CHECKOFF MAY CONFLICT WITH FIRST AMENDMENT
INSIDE THIS ISSUE	On April 9, 2018, the U.S. Court of Appeals for the Ninth Circuit upheld a preliminary injunction preventing the use of beef checkoff funds from Montana ranchers without the ranchers' consent (<i>Ranchers-Cattlemen Action Legal Fund, United Stockgrowers of America v. Perdue</i> , No. 17-35669, D.C. No. 4:16-cv-00041-BMM). Under the Beef Promotion and Research Act of 1985, a \$1 assessment is imposed on each head of cattle sold in the U.S., and on each head of cattle imported into the U.S. This assessment, or "checkoff," is then used to fund campaigns promoting the beef industry. These promotions, however, may not distinguish between domestic and foreign beef products. While the checkoff program is administered by the federal Cattlemen's Beef Promotion and Research Board (Beef Board), qualified state beef councils are empowered to collect the assessment on behalf of the Beef Board. In Montana, the assessment is collected by the Montana Beef Council (MBC). Accordingly, MBC sends 50 cents of each dollar collected to the Beef Board and uses the remaining 50 cents to fund its own beef promotional programs. Subsequently, a group representing Montana beef producers filed suit over MBC's promotion of both domestic and foreign beef. The producer group alleged that being forced to fund private speech with which they disagreed was a violation of their First Amendment rights. On June 21, 2017, the U.S. District Court in Montana issued a preliminary injunction preventing MBC use of checkoff funds because the producer group "would likely succeed on its First Amendment claim." Consequently, the Ninth Circuit found that the district court "did not abuse its discretion" when it made this determination.
Checkoff Programs	
Right to Farm Laws	
Pesticides	
Dairy Policy	
Hydraulic Fracturing	
	JURY AWARDS OVER \$50 MILLION IN HOG NUISANCE CASE
Visit our Blogs: www.pennstateaglaw.com www.pennstateshalelaw.com	On April 26, 2018, a jury in the U.S. District Court for the Eastern District of North Carolina awarded \$50,750,000 in damages due to manure management practices at a North Carolina swine facility (<i>McKiver v. Murphy-Brown LLC</i> , No. 7:14-CV-180-BR). The case involved complaints from ten neighbors that lived near a swine farm in eastern North Carolina regarding odors that emanated from the operation. At the swine farm in question, pork producer Murphy-Brown LLC, a subsidiary of Smithfield Foods, had contracted with the farm operator to raise roughly 15,000 hogs. All of the hogs at the facility were owned by Murphy-Brown. Subsequently, the jury determined that because of the nuisance created by the farm, each of the ten neighbors was entitled to \$75,000 in damages as well as \$5,000,000 in punitive damages. The ruling is the first of twenty-six nuisance cases brought against Murphy-Brown LLC involving swine operations in eastern North Carolina. Prior to the jury's award, on May 11, 2017, North Carolina enacted right to farm legislation limiting monetary damages in certain nuisance lawsuits against agricultural and forestry operations (HB 467). According to the <i>Raleigh News & Observer</i> , the legislation was "prompted" by the twenty-six lawsuits filed against Murphy-Brown. While HB 467 limits compensatory damage awards in future nuisance suits, the law does not apply retroactively. Accordingly, HB 467 does not apply to the twenty-six nuisance actions brought against Murphy-Brown.
For Email Subscription, Visit Our Website: www.pennstatelaw.psu.edu/casl	

Make Our Weekly Reviews A Part of Your Weekly Routine

We have a lot of great educational products at the Center, but the best way to stay up to date on legal developments in agricultural and shale law is with our Weekly Reviews. Each week, through the [Agricultural Law Weekly Review](#) (ALWR) and the [Shale Law Weekly Review](#) (SLWR), we provide updates to our stakeholders on agricultural and shale law developments, respectively, at the local, state, national, and international levels. Published on Thursdays, the ALWR is written primarily by Sean High. The ALWR discusses a variety of agricultural law developments, including, but not limited to, dairy policy, food labeling, industrial hemp, crop insurance, environmental issues, and Right to Farm laws. The ALWR also includes links to legal resources prepared by other agricultural law experts from across the United States. Published at the beginning of each week, the SLWR is written primarily by Jackie Schweichler and explains legal developments relating to hydraulic fracturing, pipelines, energy policy, methane emissions, severance taxes, and more. The Weekly Reviews are published on our blogs at PennStateAgLaw.com and PennStateShaleLaw.com. If you wish to have these work products delivered to your email inbox, you can subscribe on the respective blog.



Presentations

Examining the Landscape of Agricultural Certainty Programs in the United States, The Agricultural and Food Law Consortium - Webinar - Gaby Gilbeau

Emerging Environmental Issues in Agriculture, Pennsylvania Bar Institute's Annual Environmental Law Forum - Harrisburg - Ross Pifer

PA Oil and Gas Law Update, Annual NARO PA Convention - State College - Ross Pifer

The Legalities of Drone Usage, National Ag Day Open House - Berks County - Sean High

Legal Challenges and Opportunities in Agricultural Data, 53rd National Dairy Herd Information Association Annual Meeting - San Antonio, Texas - Ross Pifer

Property Rights, Easements, and Eminent Domain, Region 7 Farm Bureau Day - Williamsport - Sean High

Current Labor Situation in the Mid-Atlantic, Mid-Atlantic Fruit and Vegetable Conference - Hershey - Sean High

Past and Ongoing Shale-Related Work at the Center for Agricultural and Shale Law, Penn State Marcellus Center for Outreach and Research - State College - Ross Pifer

Pennsylvania's Oil and Gas Developments, Growth Resources of Wellsboro Board of Directors Meeting - Wellsboro - Jackie Schweichler

Seed Law; Seed Sharing, Saving, and Libraries, Annual Women in Agriculture Symposium - State College - Jackie Schweichler

Shale Energy, Local Governments & the Development of the Marcellus as a Gas Resource - Neuquén, Argentina - Ross Pifer

Legal Perspective on Landowner Rights & Utility Company Agreements, Power Line Meeting for Franklin County Farm Bureau - Chambersburg - Sean High

High Voltage Power Lines and Eminent Domain, PUC Applications and Eminent Domain Proceedings - Fawn Grove - Sean High

Property Rights, Easements, and Eminent Domain, South Mountain Partnership - Waynesboro - Sean High

A Regulatory and Legal Understanding of Brown Bag Seeds, PennAg Industries Association Keystone Crops & Soil Conference - Grantville - Sean High

Marcellus Shale Leasing Update, Clarion University Center for Legal Education 25th Annual Legal Conference - Clarion - Ross Pifer

Labor Shortage in Agriculture: Workforce Development and Training, Penn State Ag Council Delegate Meeting - Boalsburg - Sean High

Understanding the H-2A Temporary Agricultural Guest Worker Program, The Agricultural and Food Law Consortium - Webinar - Sean High

The Outlook for Small Farmers in an Era of Big Ag Consolidation, The Future of the Farm Bill: Policy, Programs, and Prognosis, Texas A&M University Law Review Symposium - Fort Worth, Texas - Ross Pifer

Leasing Workshop, Pennsylvania Farm Link - Chester County - Sean High

Farm Trespass and False Pretense Farm Issues, Pennsylvania Poultry Sales Conference and 89th Northeastern Conference on Avian Diseases - State College - Ross Pifer

Twilight Meeting, Northumberland County Conservation District - Sunbury - Sean High

Landowner Property Rights and Utility Easements, York County Farm Bureau - Airville - Sean High

Cover Crop Seed Issues, Pennsylvania No-Till Alliance Summer Field Day - Willow Street - Sean High

Shale Legislative and Regulatory Update, Penn State Extension Natural Gas Webinar Series - Ross Pifer

Current Issues in Agricultural and Shale Law, 4th Annual Mid-South Agricultural and Environmental Law Conference, The Agricultural and Food Law Consortium - Memphis, Tennessee - Ross Pifer

Current Legal Issues in Food Labeling: GMO, Menu, and Nutrition Panel Labeling, Food & Ag Summit - Manheim - Ross Pifer

Employment and Immigration Compliance Issues, Food & Ag Summit - Manheim - Sean High

AquAdvantage Salmon and Other Current Issues in GMO Regulation, The Agricultural and Food Law Consortium - Webinar - Ross Pifer

Understanding the Pennsylvania Agriculture, Communities, and Rural Environment Act, Penn State Extension - Butler - Sean High

Legal Aspects of ACRE, Chester County Ag Task Force - West Chester - Sean High

GMOs: Emerging Technology and Policy, Penn State Ag Council Delegate Meeting - Boalsburg - Ross Pifer

The Agriculture, Communities, and Rural Development Act, Conservation District Forum, Northumberland County Conservation District - Watsontown - Sean High

Governance Issues in Shale Development - Neuquén, Argentina - Ross Pifer

Review of ACRE, Right to Farm & Liability Concerns, PennAg Industries Association Manure Haulers/Applicators Council - Lancaster - Sean High

Farm Labor Law: Law Compliance and Strategies for Success, Pennsylvania Association for Sustainable Agriculture Farming for the Future Conference - State College - Ross Pifer and Sean High

Conducting an Ag Labor Self-Assessment, Penn State Extension - Gettysburg - Sean High

Managing Human Capital in Ag Industries, Adams County Ag Issues Breakfast - Gettysburg - Sean High

Sean High Discusses Property Rights, Utility Easements, and Eminent Domain

CASL staff attorney Sean High provided a series of presentations on property rights, utility easements, and eminent domain during the past year. Sean traveled to York, Franklin, and Lycoming Counties for a total of five presentations to landowners potentially affected by proposed powerline projects. Sean spoke at the request of the York County Farm Bureau, the PA South Mountain Partnership, the office of Pennsylvania State Representative Kristin Phillips-Hill, and Pennsylvania Farm Bureau Region 7.

CASL Website Gets a Makeover with Creation of New Library Guides

This year, we have made significant updates to both the Agricultural and Shale Law Library Guides. The purpose of our Library Guides is to present educational resources to guide those interested in researching and learning more about specific areas of law. The Agricultural Law Library Guide topic areas include ACRE/Pennsylvania Act 38, Chesapeake Bay, Clean and Green, FDA Food Safety Modernization Act, and more. In particular, the *H-2A Temporary Agricultural Guest Worker Program* Library Guide, written by Staff Attorney Sean High, provides a comprehensive and straightforward overview of the complex H-2A framework.

In the Shale Law Library Guides, we recently published the *Natural Gas Pipeline* Library Guide which provides resources on statutes, regulations, maps, case law, and landowner guides. This Library Guide includes resources on eminent domain law. The *Natural Gas Pipeline* Library Guide was created through the combined efforts of Chloe Marie and Jackie Schweichler, who are both lawyers working for the Center. Other Shale Law Library Guides address topics relating to frac sand mining, induced seismicity, the Delaware River Basin Commission, liquefied natural gas exports, EPA's Hydraulic Fracturing Study, Dimock Township, and UIC regulation.

Additionally, we have refreshed the "About the Center" page of our website with staff pictures and biographies. We also updated a variety of different topics within the "Current Issues in Ag Law" and the "Current Issues in Shale Law" sections. Some of those new updates include sections on industrial hemp, induced seismicity, farm protection statutes, frac sand mining, GMO Labeling, the Delaware River Basin, raw milk, and more.

Research Fellow Puts the Spotlight on Shale Law

Research Fellow Chloe Marie has been busy all year writing articles describing legal developments related to shale oil and gas for our *Shale Law in the Spotlight* series. Many of these articles provide a helpful timeline of the historic legal developments to provide appropriate context for understanding current legal developments. Chloe's *Spotlight* articles have included the Department of Environmental Protection's review of the seismic events that occurred in Lawrence County, Pennsylvania; water quality issues in Dimock Township; the "Waters of the United States" definition; severance tax systems throughout the United States; and a series of articles on recent pipeline developments, including those within Pennsylvania as well as the Dakota Access and Keystone XL pipelines. These *Spotlight* articles are available on the [Penn State Shale Law Blog](#).



The Center Takes the Reins: Agricultural Mediation Program

Director Ross Pifer recently announced that the Center for Agricultural and Shale Law has taken on the responsibility of administering the Pennsylvania Agricultural Mediation Program, providing another avenue for the Center to serve and assist the state's farmers and producers.

The Pennsylvania Agricultural Mediation Program is funded by a grant from the United States Department of Agriculture. The program provides mediation services to Pennsylvania's agricultural producers, creditors of producers, and persons who have received an adverse USDA ruling. When dissatisfied with a ruling, a producer has the option of seeking mediation rather than filing an appeal with the USDA National Appeals Division. The state Department of Agriculture had administered the program for the past decade.

"The transition made sense to both parties, so the Ag Law Center applied and received program certification from USDA," said state Agriculture Secretary Russell Redding. "We're pleased they have taken on this role. It is a natural extension of the services they are already providing to our agricultural community."

"We are very appreciative of the work that the Department has done in establishing and operating the Pennsylvania Agricultural Mediation Program, and we look forward to having the Center for Agricultural and Shale Law continue the development of this important program," said Pifer. "This program will provide another opportunity for the Center to serve Pennsylvania's agricultural community consistent with Penn State's land-grant mission."

A variety of scenarios could lead to a mediation request, including disagreements over wetland determinations; compliance with farm programs, including conservation programs; agricultural loans, regardless of whether the loans were made or guaranteed by USDA, or made by a third party; rural water loan programs; or pesticides.

The program administrator coordinates all aspects of the mediation session and provides a qualified mediator to work with both parties to negotiate an acceptable outcome. With the ongoing financial support provided through the USDA grant, there is no charge for eligible producers to participate in the Pennsylvania Agricultural Mediation Program.

Penn State Law professor Lara Fowler, who has an extensive background in natural resource mediation, is working with the Center on this program. For more information on the Pennsylvania Agricultural Mediation Program, contact Gaby Gilbeau, mediation program coordinator, at (814) 863-6441 or at agmediation@pennstatelaw.psu.edu.



Diving into the World of Social Media

This year, we dramatically increased our social media presence with the use of Twitter and Facebook. Our Twitter account now has more than 1,000 followers and 4,000 tweets! Both accounts offer a great way to stay up to date on current agricultural and shale law news as well as Center activities. We tweet daily “HotLinks” which include links to interesting agriculture and shale developments that are legal, political, business, or research related. Every Friday, on our Facebook page, we post the CASL Ledger, which provides a snapshot of the Center’s activities and work product from the week. On both Facebook and Twitter, we post pictures from our recent events and share information on important upcoming events. In addition, each month we publish an Events Calendar which includes a list of agricultural and shale law events for the month.

Our Facebook page can be found by searching for “Penn State Center for Agricultural and Shale Law” or by searching: @AgShaleLaw. You can follow us on Twitter with our handle: @AgShaleLaw.

Tweets 4,151 Following 1,013 Followers 1,032 Likes 1,146 Lists 2 Moments 0

Edit profile

PSU Ag & Shale Law

@AgShaleLaw

Penn State Center for Agricultural and Shale Law - conducting research and education programs on two of the biggest issues in #rural America - #aglaw #shalelaw

State College, PA

pennstatelaw.psu.edu/casl

Tweets Tweets & replies Media



PSU Ag & Shale Law @AgShaleLaw · 3m

Interested in listening to a weekly update on Shale Law? Check out our Shale Law Podcast! With new episodes each week at:



Shale Law Podcast

This is the Shale Law Podcast, brought to you by the Center for Agricultural and Shale Law. This podcast was created to keep you in the know on current eve...

shalelawpodcast.libsyn.com

Your Tweet activity

Your Tweets earned 1,125 impressions over the last 24 hours



View your top Tweets

Center Responds to Stakeholder & Media Inquiries

On a regular basis, stakeholders contact CASL staff members requesting information regarding specialized agricultural legal issues. Frequent topics include leasing, zoning, and Pennsylvania’s statutory protections of agriculture. Although the Center does not provide legal advice, a CASL staff member discusses each inquiry with the stakeholder and provides information regarding the specific issue. When necessary, the CASL staff member will conduct research on the issue and provide the requesting stakeholder with follow-up information. Members of the agricultural press and general media also frequently contact the Center seeking comment on recent legal developments. Some of the articles in which Center staff have been quoted are listed below.

- *Pennsylvania Court Wades into Uncharted Territory, Finds Shale Wells Could Trespass*, NATURAL GAS INTELLIGENCE
- *Judge Fines Environmental Attorneys \$52,000 for ‘Frivolous’ Injection Well Suit*, STATEIMPACT PA
- *Farmer Beware: Agriculture Enters Age of Civil Suits*, AGWEB
- *Ag Attorney Encourages Farmers to Become Familiar with H-2A Program*, BROWNFIELD
- *Farm Aid Spotlights Appalachian Farms to Shun Development and Focus on Food*, PITTSBURGH POST-GAZETTE
- *Farmer Finds Noxious Weeds in Pipeline Easement*, LANCASTER FARMING

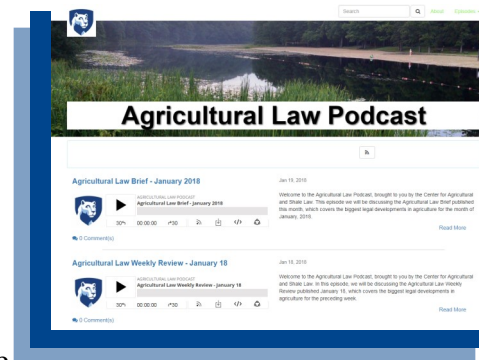
Penn State Law Students Establish Podcasts

Listen for Updates!

We have launched two new podcast products: The Shale Law Podcast and The Agricultural Law Podcast. Our podcast series provides another mechanism for interested stakeholders to stay in touch with legal developments. Now, busy stakeholders can listen for updates on the drive to work or while multitasking at home. This is the first time the Center has taken on podcasting, and so far we’ve received positive feedback.

The podcasts are run primarily by two of the Center’s research assistants, Joseph Mooradian and Deanna Smith. In The Agricultural Law Podcast, Joseph and Deanna create a weekly podcast where they discuss the most recent agricultural law developments during the past week. They also produce a monthly podcast where they discuss with Sean High the most important legal developments during the prior month. Deanna and Joseph also record episodes for the Shale Law Podcast on a weekly basis, where they discuss the most recent legal shale developments.

Our podcasts can be found at aglawpodcast.libsyn.com and shalelawpodcast.libsyn.com. Both podcasts are also available on Spotify, Stitcher, and iTunes.



Center Engages with Partners in National Agricultural & Food Law Consortium

The Agricultural & Food Law Consortium is a national multi-institutional collaboration designed to enhance and expand the development and delivery of authoritative, timely, and objective agricultural and food law research and information. This information is available to the nation's vast agricultural community of producers, attorneys, state and federal policymakers, Cooperative Extension Service professionals, and others at the local, state, regional, and national levels. Agricultural law and food law includes law related to land-based food, fiber, and energy production systems, as well as seafood and marine-based aquaculture.

The National Agricultural Law Center (NALC) is the lead institution in the consortium. Headquartered in Fayetteville, Arkansas, NALC is a unit of the University of Arkansas System Division of Agriculture. Consortium partners also include the National Sea Grant Law Center at the University of Mississippi School of Law, the Agricultural & Resource Law Program at the Ohio State University, together with the Center for Agricultural and Shale Law (CASL) at Penn State Law. The current projects of the consortium include a monthly webinar series on timely and important agricultural and food law topics, a Quarterly Update of significant legal developments, an annual agricultural and environmental law conference in Memphis, Tennessee, and the maintenance of the Ag and Food Law Blog at www.agandfoodlaw.com. Within the past year, CASL staff have provided webinars through the consortium webinar series - including Sean High discussing agricultural labor issues and Gaby Gilbeau discussing agricultural certainty programs throughout the United States. CASL staff are scheduled to provide additional webinars in the upcoming year.

The work of the consortium is supported by a multiyear grant from the National Agricultural Library, Agricultural Research Service, U.S. Department of Agriculture.



Penn State Shale Law Blog Addresses Shale Governance Issues Across the Globe

The Center has undertaken extensive work related to shale oil and gas development in Pennsylvania and the United States while also addressing issues of shale governance internationally. Written by Research Fellow Chloe Marie, the Global Shale Law Compendium article series on the Penn State Shale Law Blog addresses legal developments and other issues related to the governance of shale oil and gas activities in various countries and regions of the world. Articles in this series have discussed shale governance in the European Union, France, England, Germany, Poland, the Netherlands, South Africa, Algeria, Brazil, Argentina, Mexico, Australia, Canada including its provincial governments, New York, Maryland, Illinois, North Carolina, Pennsylvania, the New England states, and more. The articles on shale governance in Pennsylvania included a four-part series on legislative developments and a three-part series on regulatory developments.

Center Director Participates in Shale Governance Programs with Local and Provincial Officials in Argentina

Working on a project led by Penn State's Center for Marcellus Outreach and Research, Ross Pifer has traveled to Argentina on multiple occasions to participate in programs with Argentine government officials. During these programs, Professor Pifer has participated in an information exchange by discussing issues of state and local governance within Pennsylvania and the United States while also learning about developmental issues in Argentina. These programs have focused on the

Province of Neuquen and its Vaca Muerta Shale Formation.



Meeting with government officials and community members in Allen, Argentina



Ross Pifer with the former governor of Neuquen in Argentina after serving as co-panelists discussing shale governance

Meet Our Staff



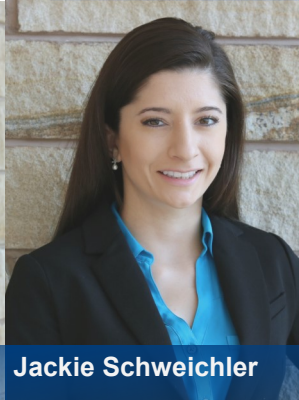
Professor Ross Pifer

Ross Pifer's research focuses on shale gas development and the interface between various types of development in rural areas. He has been an attorney with USDA's Office of General Counsel. He has presented widely throughout Pennsylvania as well as nationally and internationally on shale gas and agricultural law topics. In the classroom, he teaches Agricultural Law, Oil and Gas Law, and Property.



Sean High

Sean is a graduate of Penn State Law and serves as staff attorney at the Penn State Center for Agricultural and Shale Law. His duties include researching agricultural law issues and presenting his findings at various programs to interested stakeholders. Sean is the primary author of the Agricultural Law Brief and the Agricultural Law Weekly Review.



Jackie Schweichler

Jacqueline grew up in Edinboro, Pennsylvania, and obtained her B.A. in criminal justice at Edinboro University. She earned her J.D. degree from Penn State Law in May 2016. At the Center, Jacqueline is responsible for writing the Shale Law Weekly Review and has done presentations and research on pipelines, oil and gas case law, seed laws, RULWA, agritourism, and more.



Chloe Marie

Chloe Marie graduated from Penn State Law in May 2015 with an LL.M. degree focusing her studies on energy law and policy. Before enrolling at Penn State, she earned a bachelor of law and a master of law from the University of Paris XI. At the Center, she is the primary author of the Shale Law in the Spotlight series and has prepared numerous other shale law resources.



Gaby Gilbeau

Gaby earned two undergraduate degrees from Virginia Tech in animal poultry science and dairy science before attending law school at Penn State Law. She works for the Center in the areas of environmental law and policy, including water quality law and ag conservation. She is the program coordinator for the PA Agricultural Mediation Program, which is administered by the Center.

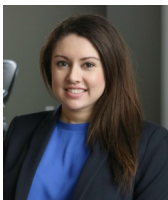
Research Assistants



Deanna Smith is from Peach County, Georgia, and obtained her B.B.A. in marketing and history at Mercer University. She is a rising 3L at Penn State Law and current exchequer for the Phi Delta Phi legal fraternity. At the Center, Deanna is primarily responsible for social media and general agricultural law issues.



Errin McCaulley grew up in Bellwood, Pennsylvania, and graduated from Penn State Schreyer Honors College in 2015 with a B.S. in political science. At the Center, Errin focuses his research on food safety regulation and other agricultural law topics. He will be graduating from Penn State Law in May 2018.



Chelsea Wilson grew up in Chandler, Texas, and graduated from Southwestern Assemblies of God University with a B.S. in business. She will be graduating from Penn State Law in May 2018. Chelsea has worked at the Center since her 1L summer, focusing primarily on shale law research.



Tori Wunder grew up on the shoreline in Connecticut. She graduated from the University of Connecticut with a B.A. in political science and a B.A. in communications. She is a rising 3L at Penn State Law. At the Center, Tori focuses her research on shale law and policy.



Joseph Mooradian lives in State College, Pennsylvania, and earned his B.A. in English at Penn State. He is a rising 3L and a member of the Phi Delta Phi legal fraternity. At the Center, Joseph is primarily responsible for the podcasts, and he focuses his research on agricultural law topics.



Mary Webber is from Coon Rapids, Minnesota. In 2015, she received her B.A. in global studies and a minor in sustainable agriculture from the University of Minnesota. She is a rising 3L at Penn State Law. At the Center, she focuses on sustainable farming practices and agricultural law.



What We Do

Research Publications The Center conducts legal research and prepares publications on a variety of topics. Within the past year, we have written publications in the areas of oil and gas case law, seed laws, agricultural labor law, and environmental issues.

Presentations The Center gives presentations, including in-person appearances and live webinars, to a variety of stakeholders on agricultural and shale law related topics. (*See a list of our recent presentations on page 3.*)

Agricultural Law Brief (ALB) Published monthly and distributed via email, the ALB addresses five major legal developments from the past month. Archived versions of the ALB and a subscription link are available on our website.

Agricultural Law Weekly Review & Shale Law Weekly Review Published on our Penn State Agricultural Law Blog and Penn State Shale Law Blog, respectively, these two weekly publications provide updates on recent legal developments in the fields of agricultural and shale law with a focus on issues of importance in Pennsylvania.

Pennsylvania Agricultural Mediation Program Funded by USDA, this program provides mediation services to qualified agricultural producers in Pennsylvania.

Website On our website, we provide various resources for agricultural and shale law research. Most of our work products can be found on our website at: www.pennstatelaw.psu.edu/casl

Agricultural and Shale Law Library Guides Our Library Guides provide in-depth information on a large variety of topics in the agricultural and shale law fields. To learn more about these topics or to research one of these subjects, check out our website.

Shale Law in the Spotlight Published weekly on the Penn State Shale Law Blog, *Shale Law in the Spotlight* provides comprehensive background information on a selected individual legal development in the shale law field.

Global Shale Law Compendium The Global Shale Law Compendium series is published on our Shale Law Blog and addresses legal developments and other issues related to the governance of shale oil and gas activities in various countries and regions, including within the United States.

Podcasts Each week, Penn State Law students host the Agricultural Law Podcast and the Shale Law Podcast which provide easy-listening updates on legal developments in agricultural and shale law.

HotLinks Posted daily on our Twitter account, AgLaw HotLinks and ShaleLaw HotLinks connect our followers with relevant media articles and other resources. Follow us on Twitter - @AgShaleLaw - to receive these updates.

CASL Ledger Published every Friday on our Facebook page, the CASL Ledger recaps all of our research and education activities from the week. You can find our Facebook page by searching for “Penn State Center for Agricultural and Shale Law” or “@AgShaleLaw.”

Follow us on Facebook and Twitter! @AgShaleLaw



PROFESSIONAL STAFF

**PENN STATE CENTER FOR
AGRICULTURAL AND SHALE LAW**
329 Innovation Blvd., Suite 118
University Park, PA 16803
Phone: 814-865-4290
Fax: 814-865-3851
www.pennstatelaw.psu.edu/casl

Center Director
Professor Ross H. Pifer
Email: rpifer@psu.edu

Staff Attorney
Sean High, J.D.
Email: mzh177@psu.edu

Education Programs Coordinator
Jacqueline Schweichler, J.D.
Email: jks251@psu.edu

Research Fellow
Chloe Marie, LL.M.
Email: cjm445@psu.edu

CENTER MISSION AND BACKGROUND

The Center for Agricultural and Shale Law conducts research and educational programs to serve a wide variety of stakeholders including agricultural producers, landowners, mineral interest and royalty owners, business professionals, judges, attorneys, legislators, government officials, community groups, and the general public. Center programs are funded in part by the Commonwealth of Pennsylvania through the Pennsylvania Department of Agriculture. This material also is based upon work supported by the National

Agricultural Library, Agricultural Research Service, U.S. Department of Agriculture. This publication is available in alternative media upon request. Penn State is committed to affirmative action, equal opportunity, and the diversity of its workforce. U.Ed. PSL 18-53.

